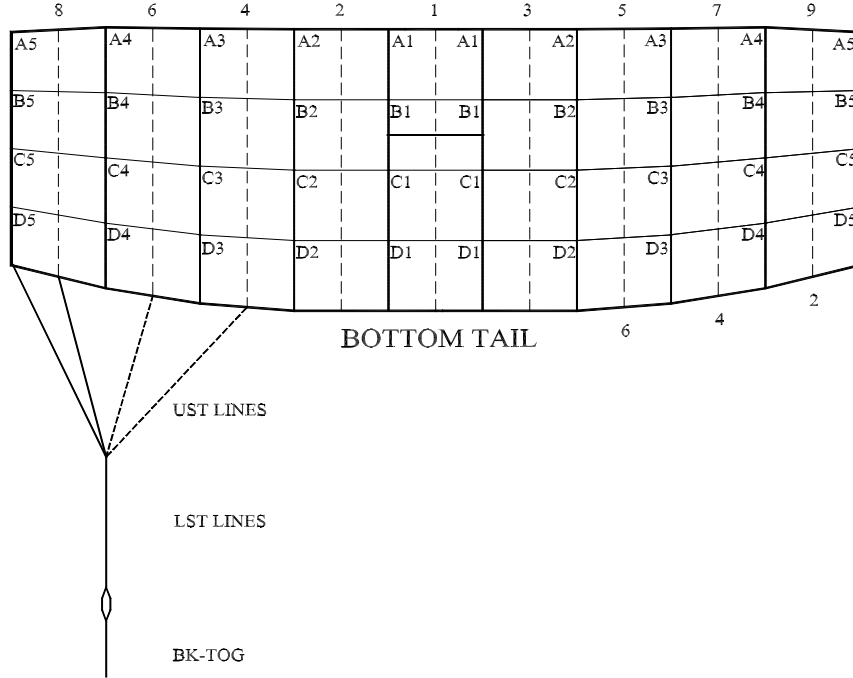




Performance Designs, Inc
 1300 E Int'l Speedway Blvd
 DeLand FL 32724
 Telephone: 386-738-2224
 Fax: 386-734-8297

**LINE TRIM CHART
 FOR**

PD STUDENT 200 - 300



| | NS-200 | NS-220 | NS-240 | NS-260 | NS-280 | NS-300 |
|-----------------|-----------------------|-----------------------|-----------------------|-----------------------|-----------------------|-----------------------|
| A1 | 148 1/2 | 155 5/8 | 160 7/8 | 164 1/8 | 167 1/8 | 170 1/8 |
| A1-B1 | 2 3/4 | 3 | 3 | 3 1/8 | 3 1/4 | 3 3/8 |
| A1-C1 | 9 7/8 | 10 3/8 | 11 | 11 1/2 | 11 7/8 | 12 3/8 |
| A1-D1 | 19 1/2 | 20 5/8 | 21 5/8 | 22 5/8 | 23 1/2 | 24 1/2 |
| A2 | 148 1/2 | 155 5/8 | 160 7/8 | 164 1/8 | 167 1/8 | 170 1/8 |
| A2-B2 | 2 3/4 | 3 | 3 | 3 1/8 | 3 1/4 | 3 3/8 |
| A2-C2 | 9 7/8 | 10 3/8 | 10 7/8 | 11 3/8 | 11 7/8 | 12 3/8 |
| A2-D2 | 19 1/2 | 20 5/8 | 21 5/8 | 22 1/2 | 23 1/2 | 24 3/8 |
| A3 | 148 3/8 | 155 5/8 | 160 7/8 | 164 1/8 | 167 1/8 | 170 1/8 |
| A3-B3 | 2 5/8 | 2 7/8 | 3 | 3 1/8 | 3 1/8 | 3 1/4 |
| A3-C3 | 9 1/2 | 10 | 10 1/2 | 11 | 11 1/2 | 12 |
| A3-D3 | 19 | 20 | 21 | 21 7/8 | 22 7/8 | 23 3/4 |
| A4 | 148 1/4 | 155 1/2 | 160 3/4 | 164 | 167 | 170 |
| A4-B4 | 2 1/2 | 2 5/8 | 2 3/4 | 2 3/4 | 3 | 3 |
| A4-C4 | 8 3/4 | 9 1/8 | 9 5/8 | 10 | 10 1/2 | 10 7/8 |
| A4-D4 | 17 1/2 | 18 1/2 | 19 3/8 | 20 1/4 | 21 | 21 7/8 |
| A5 | 148 1/8 | 55 3/8 | 160 5/8 | 163 7/8 | 166 7/8 | 169 7/8 |
| A5-B5 | 2 3/8 | 2 5/8 | 2 5/8 | 2 3/4 | 2 7/8 | 3 |
| A5-C5 | 7 5/8 | 8 1/8 | 8 1/2 | 8 7/8 | 9 1/4 | 9 5/8 |
| A5-D5 | 15 3/8 | 16 1/4 | 17 | 17 3/4 | 18 1/2 | 19 1/4 |
| LST | 109 7/8 | 114 3/4 | 118 1/4 | 118 | 121 1/4 | 125 3/8 |
| A5-UST1 | 13 3/8 | 13 5/8 | 14 1/4 | 13 1/8 | 15 5/8 | 18 |
| A5-UST2 | 13 3/8 | 13 5/8 | 14 1/4 | 13 1/8 | 15 5/8 | 18 |
| A5-UST4 | 13 3/8 | 13 5/8 | 14 1/4 | 13 1/8 | 15 5/8 | 18 |
| A5-UST6 | 13 3/8 | 13 5/8 | 14 1/4 | 13 1/8 | 15 5/8 | 18 |
| B STAB SLK | 1/2 | 1/2 | 1/2 | 1/2 | 1/2 | 1/2 |
| C STAB SLK | 1 | 1 | 1 | 1 | 1 | 1 |
| D STAB SLK | 1 1/2 | 1 1/2 | 1 1/2 | 1 1/2 | 1 1/2 | 1 1/2 |
| BK-TOG* | 19 7/8 | 20 7/8 | 23 3/4 | 24 5/8 | 23 3/8 | 25 1/4 |
| Standard Slider | 23" Chord 31" Span | 23" Chord 31" Span | 23" Chord 31" Span | 23" Chord 31" Span | 26" Chord 31" Span | 26" Chord 31" Span |

*Due to development methodology, the finished BK-TOG dimensions may not scale