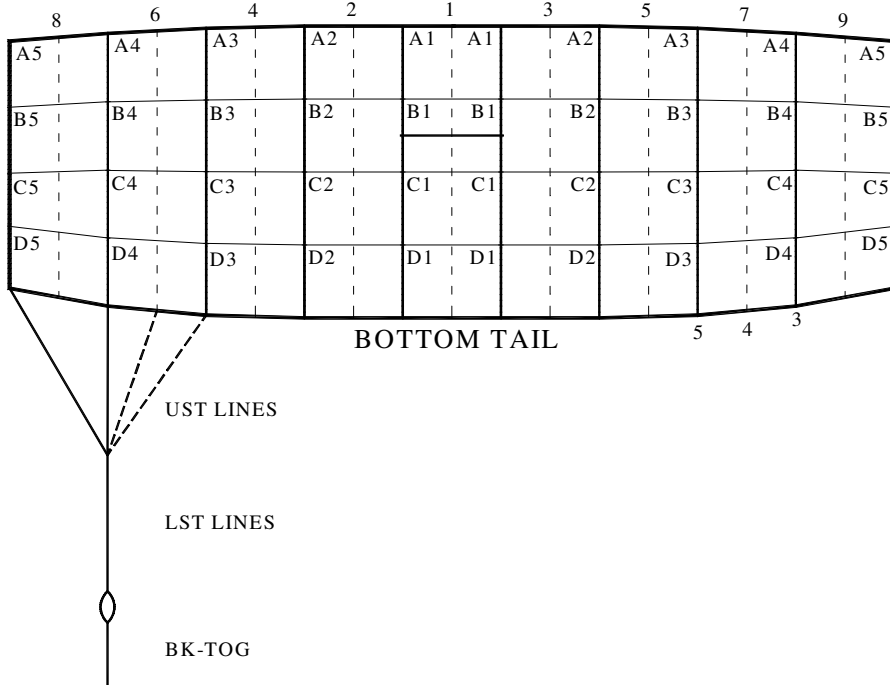


CONTINUOUS A-B



Performance Designs, Inc
 1300 E Int'l Speedway Blvd
 DeLand FL 32724
 Telephone: 386-738-2224
 Fax: 386-734-8297

LINE TRIM CHART
 FOR
 SABRE2 097 - 170



	SA-097	SA-107	SA-120	SA-135	SA-150	SA-170
CA1	99	104	110 1/8	116 3/4	123 1/8	131 1/8
A1-B1	2 1/2	2 5/8	2 3/4	2 7/8	3 1/8	3 1/4
A1-C1	8	8 1/2	9	9 1/2	10	10 3/4
A1-D1	15 1/4	16	17	18	19	20 1/4
A2	100	105	111 1/4	118	124 3/8	132 3/8
A2-B2	1 3/4	1 7/8	2	2 1/8	2 1/4	2 3/8
A2-C2	7	7 3/8	7 3/4	8 1/4	8 3/4	9 1/4
A2-D2	14 1/4	14 7/8	15 3/4	16 3/4	17 5/8	18 7/8
A3	100	105	111 1/4	118	124 3/8	132 3/8
A3-B3	1 7/8	2	2 1/8	2 1/4	2 3/8	2 1/2
A3-C3	6 7/8	7 1/4	7 5/8	8 1/8	8 5/8	9 1/8
A3-D3	14	14 3/4	15 5/8	16 1/2	17 3/8	18 1/2
A4	99 7/8	105	111 1/8	117 7/8	124 1/4	132 1/4
A4-B4	1 7/8	2	2 1/8	2 1/4	2 3/8	2 1/2
A4-C4	6 5/8	6 7/8	7 3/8	7 3/4	8 1/4	8 3/4
A4-D4	13 3/8	14	14 7/8	15 3/4	16 5/8	17 3/4
A5	99 7/8	104 7/8	111 1/8	117 7/8	124 1/8	132 1/4
A5-B5	1 7/8	2	2 1/8	2 1/4	2 3/8	2 5/8
A5-C5	6	6 3/8	6 3/4	7 1/8	7 1/2	8
A5-D5	12 1/8	12 3/4	13 1/2	14 3/8	15 1/8	16 1/8
A5-UST1	8 3/8	8 1/2	8 3/4	9	9 1/4	9 5/8
A5-UST3	5 1/4	5 1/4	5 1/4	5 3/8	5 3/8	5 1/2
A5-UST4	6 1/8	6 1/8	6 1/4	6 3/8	6 1/2	6 5/8
A5-UST5	8 3/4	9	9 1/4	9 5/8	9 7/8	10 1/4
B STAB SLK	1/2	1/2	1/2	1/2	1/2	1/2
C STAB SLK	1	1	1	1	1	1
D STAB SLK	1 1/2	1 1/2	1 1/2	1 1/2	1 1/2	1 1/2
BK-TOG-DAC	17 7/8	18 3/4	19 3/4	20 7/8	21 7/8	23 1/4
BK-TOG-MIC	17 7/8	18 3/4	19 3/4	20 7/8	21 7/8	23 1/4
BK-TOG-VEC	17 1/2	18 1/4	19 3/8	20 1/2	21 1/2	22 7/8
Channel	23" Chord	23" Chord	23" Chord	23" Chord	23" Chord	23" Chord
Slider	31" Span	31" Span	31" Span	31" Span	31" Span	31" Span

*Due to development methodology, the finished BK-TOG dimensions may not scale