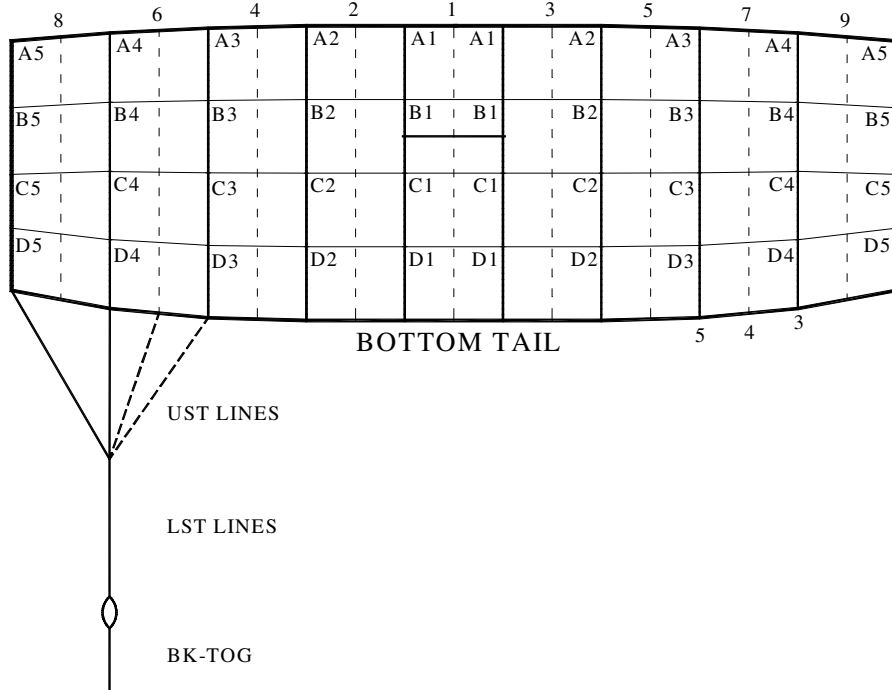




Performance Designs, Inc
 1300 E Int'l Speedway Blvd
 DeLand FL 32724
 Telephone: 386-738-2224
 Fax: 386-734-8297

LINE TRIM CHART FOR SABRE2 097 - 170



	SA-097	SA-107	SA-120	SA-135	SA-150	SA-170
A1	100 3/8	105 3/8	111 7/8	118 1/2	124 1/2	132 7/8
A1-B1	1 7/8	2	2 1/8	2 3/8	2 1/2	2 5/8
A1-C1	7	7 3/8	7 3/4	8 3/8	8 7/8	9 1/2
A1-D1	13 7/8	14 5/8	15 1/2	16 3/4	17 3/4	19
A2	100 3/8	105 3/8	111 7/8	118 1/2	124 5/8	132 7/8
A2-B2	1 7/8	2	2 1/4	2 3/8	2 1/2	2 5/8
A2-C2	7	7 3/8	7 7/8	8 3/8	8 7/8	9 1/2
A2-D2	13 7/8	14 5/8	15 5/8	16 3/4	17 3/4	19
A3	100 3/8	105 3/8	111 7/8	118 1/2	124 5/8	132 7/8
A3-B3	2	2 1/8	2 1/4	2 1/2	2 5/8	2 7/8
A3-C3	7	7 3/8	8	8 1/2	9	9 5/8
A3-D3	13 7/8	14 5/8	15 3/8	16 5/8	17 3/4	19
A4	100 3/8	105 3/8	111 7/8	118 1/2	124 5/8	132 7/8
A4-B4	2 1/4	2 3/8	2 1/2	2 5/8	2 7/8	3
A4-C4	6 7/8	7 1/4	7 5/8	8 1/4	8 3/4	9 1/2
A4-D4	13 1/4	14	14 5/8	16	17	18 1/4
A5	100 3/8	105 1/2	111 7/8	118 1/2	124 3/4	133
A5-B5	2 3/8	2 1/2	2 5/8	2 7/8	3 1/8	3 3/8
A5-C5	6 3/4	7 1/8	6 1/8	8 1/8	8 5/8	9 3/8
A5-D5	11 3/4	12 3/8	12 7/8	14 1/8	15	16 1/8
LST	76 7/8	80 1/2	85	89 7/8	92 1/8	99 7/8
A5-UST1	13	14	14 1/4	14 5/8	13 1/8	15 1/2
A5-UST3	10	10 5/8	10 3/4	11 1/8	9 3/8	11 1/2
A5-UST4	10 5/8	11 5/8	11 3/4	12	10 1/4	12 5/8
A5-UST5	13 1/2	14 3/8	14 3/4	15 1/4	13 7/8	16 1/4
B STAB SLK	1/2	1/2	1/2	1/2	1/2	1/2
C STAB SLK	1	1	1	1	1	1
D STAB SLK	1 1/2	1 1/2	1 1/2	1 1/2	1 1/2	1 1/2
BK-TOG*	13 5/8	14 1/4	15	15 7/8	18 7/8	18
Channel	23" Chord	23" Chord	23" Chord	23" Chord	23" Chord	23" Chord
Slider	31" Span	31" Span	31" Span	31" Span	31" Span	31" Span

*Due to development methodology, the finished BK-TOG dimensions may not scale