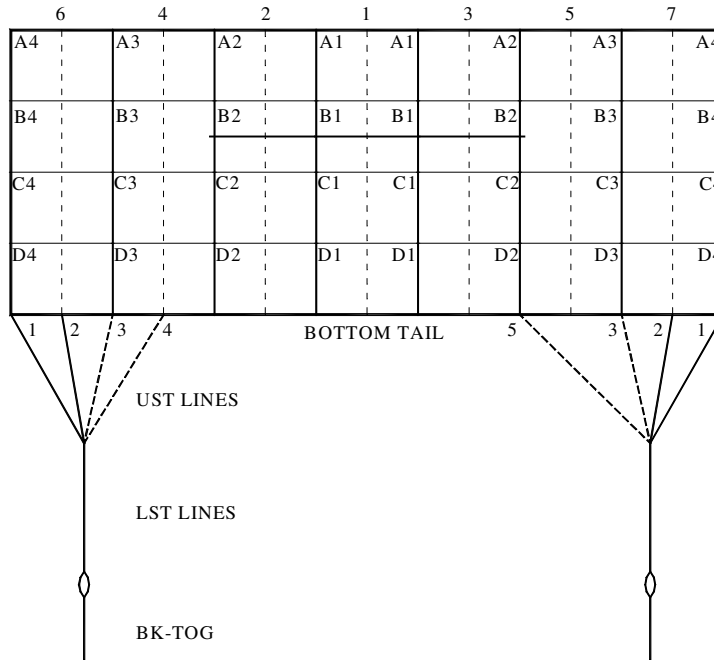




Performance Designs, Inc  
 1300 E Int'l Speedway Blvd  
 DeLand FL 32724  
 Telephone: 386-738-2224  
 Fax: 386-734-8297

**LINE TRIM CHART  
 FOR**

**LIGHTNING 193 - 253**



|                    | 193, 9'               | 193, 10'              | 193, 10.5'            | 218, 9'               | 218, 10'              | 235                   | 253                   |
|--------------------|-----------------------|-----------------------|-----------------------|-----------------------|-----------------------|-----------------------|-----------------------|
| CA1, CA4           | 106 3/8               | 118                   | 123 7/8               | 106 1/4               | 117 3/4               | 143 1/2               | 149                   |
| CA-CB              | 1 3/8                 | 1 3/4                 | 1 7/8                 | 1 3/8                 | 1 3/4                 | 3                     | 3 1/8                 |
| CA-C               | 10 3/8                | 10 5/8                | 10 5/8                | 11 1/8                | 11 1/2                | 12 3/8                | 12 3/4                |
| CA-D               | 19 1/4                | 19 1/2                | 19 1/2                | 20 3/4                | 21 1/8                | 23 1/8                | 23 7/8                |
| A2, A3             | 107 3/8               | 119 3/8               | 125 1/8               | 107 1/4               | 119 1/8               | 144 1/8               | 149 1/2               |
| A-B                | 1 5/8                 | 1 5/8                 | 1 5/8                 | 1 5/8                 | 1 1/2                 | 3 5/8                 | 3 3/4                 |
| A-C                | 9 3/8                 | 9 3/8                 | 9 3/8                 | 10 1/8                | 10 1/8                | 11 3/4                | 12 1/8                |
| A-D                | 18 1/4                | 18 1/8                | 18 1/4                | 19 3/4                | 19 3/4                | 22 1/2                | 23 3/8                |
| CA4-UST            | 16                    | 16 1/4                | 16 3/8                | 16 1/8                | 16 1/2                | 16 1/4                | 16 5/8                |
| B STAB SLK         | 1/2                   | 1/2                   | 1/2                   | 1/2                   | 1/2                   | 1/2                   | 1/2                   |
| C STAB SLK         | 1                     | 1                     | 1                     | 1                     | 1                     | 1                     | 1                     |
| D STAB SLK         | 1 1/2                 | 1 1/2                 | 1 1/2                 | 1 1/2                 | 1 1/2                 | 1 1/2                 | 1 1/2                 |
| BRIDLE             | 82                    | 82                    | 82                    | 93                    | 93                    | 93                    | 102                   |
| BK-TOG*            | 19 1/4                | 19 1/4                | 19 1/4                | 21 1/4                | 21 1/4                | 26 1/2                | 27 1/2                |
| Standard<br>Slider | 17" Chord<br>31" Span | 17" Chord<br>31" Span | 17" Chord<br>31" Span | 17" Chord<br>31" Span | 17" Chord<br>31" Span | 17" Chord<br>31" Span | 17" Chord<br>31" Span |

\*Due to development methodology, the finished BK-TOG dimensions may not scale  
 Measurements in Inches