

# Appendix A: Maintenance and Repairs

Applicable to all Javelin and Javelin Odyssey harness/container systems, sport and student.

Your Javelin/Javelin Odyssey harness container system is built with the latest technology and most up to date manufacturing methods.

## **QUALIFIED PERSONNEL:**

It is strongly recommended that all major repairs to Javelin/Javelin Odyssey harnesses and container systems be made at the manufacturers' facility in Zephyrhills, Florida.

## **AUTHORIZATION:**

Javelin/Javelin Odyssey harness/container systems are certified under TSO c23d. The TSO label is located under the reserve pin cover flap or inside the pocket on the yoke if the rig has a clear reserve pin cover. If this label is not present or has been removed **DO NOT PACK THE RIG.** Removal of the TSO label voids the TSO and all certification approvals.

**IF THERE ARE ANY VISIBLE SIGNS OF WEAR OR DAMAGE, HAVE YOUR RIG THOROUGHLY INSPECTED BY A CERTIFIED PARACHUTE RIGGER OR OUR MANUFACTUREING FACILITY IN ZEPHYRHILLS, FLORIDA BEFORE NEXT USE.**

## **LIMITS AND GUIDELINES FOR DAMAGE:**

Limits and guidelines for webbing are applicable to all sections of the harness. To include reserve risers, main lift web, lateral/diagonal and leg straps.

At every repack cycle, the entire harness/container system should be thoroughly inspected. Completion of this inspection and annotation of an A/I/P or A/I/R on the packing data card implies that the certifying party has inspected and deemed the harness, container and all applicable components to be airworthy and ready for use.

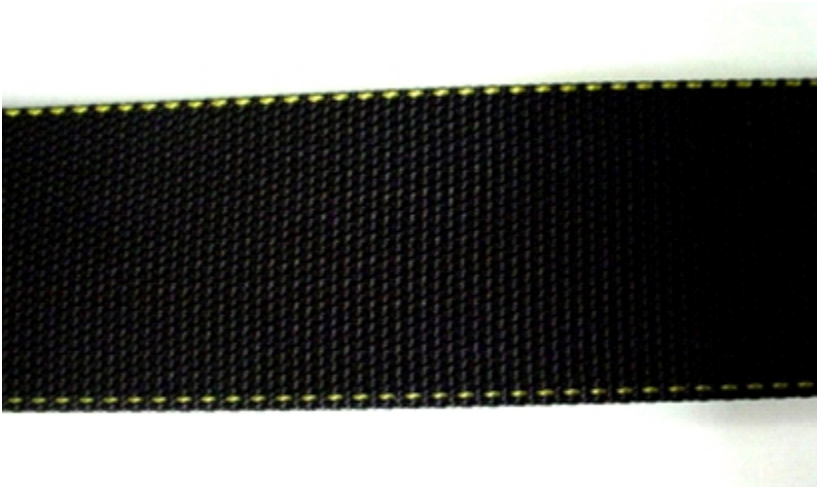
A visual inspection of the harness webbing and hardware should be conducted before each use to determine whether or not it is showing signs of abrasion, fraying, nicks, unusual wear and tear or any other visible damage to any part of the webbing and or hardware damage that will degrade its strength. Refer to the following grading list as a guideline for determining webbing wear.

■ **Grade 1** Like new, does not need replacement. See Fig. 1

■ **Grade 2** Minor Hook and Loop type abrasion.  
Minor wear due to normal use. Replacement optional, make note to inspect specific area on every repack cycle. See Fig. 2

■ **Grade 3** Any damage to selvedge edges of harness webbing. Broken or missing harness stitching. Mandatory replacement or repair. See Fig. 3

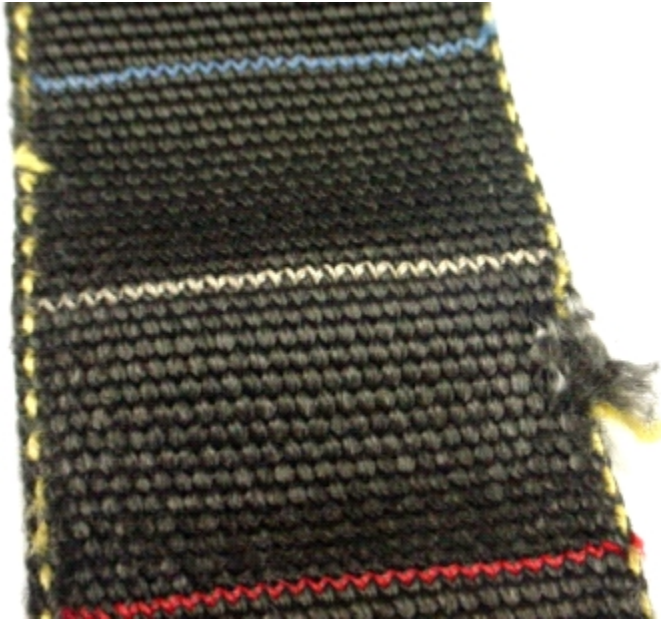
**Figure 1**            **Grade 1**



**Figure 2**            **Grade 2**



**Figure 3      Grade 3**



**STORAGE:**

Textiles and other materials used in the manufacture of parachute equipment to include harness/container systems are sensitive to the following environmental elements.

- Water/humidity
- Salt water
- Ultraviolet rays (Sunlight)
- All petroleum based products (oil, grease)
- Rodents, pests
- Smoke
- Excessive heat
- Chlorine (bleach)
- Acid

While the parachute equipment is not in use it is recommended to store the gear in a proper gear bag and in a room where the temperature and humidity is maintained.